

Welcome!

What we will cover today...

1. **Presentation from host and introduction to EPSRC**, Annette Bramley
2. **EPSRC Regional Engagement Strategy**, Natalie Jones, Marie-Louise Cairns and introducing Helen Niblock
3. **RI Summary**, Ben Rendell
4. **Impact in the brave new world**, Glenn Goodall
5. **Handling Impact in applications to EPSRC**, Deepali Lodhia
6. **Break**
7. **Q&A**
8. **Final remarks and exit poll**





Engineering and
Physical Sciences
Research Council

Regional engagement: the EPSRC approach

Marie-Louise Cairns, Northern Ireland

Natalie Jones, North West England

Heads of Regional Engagement

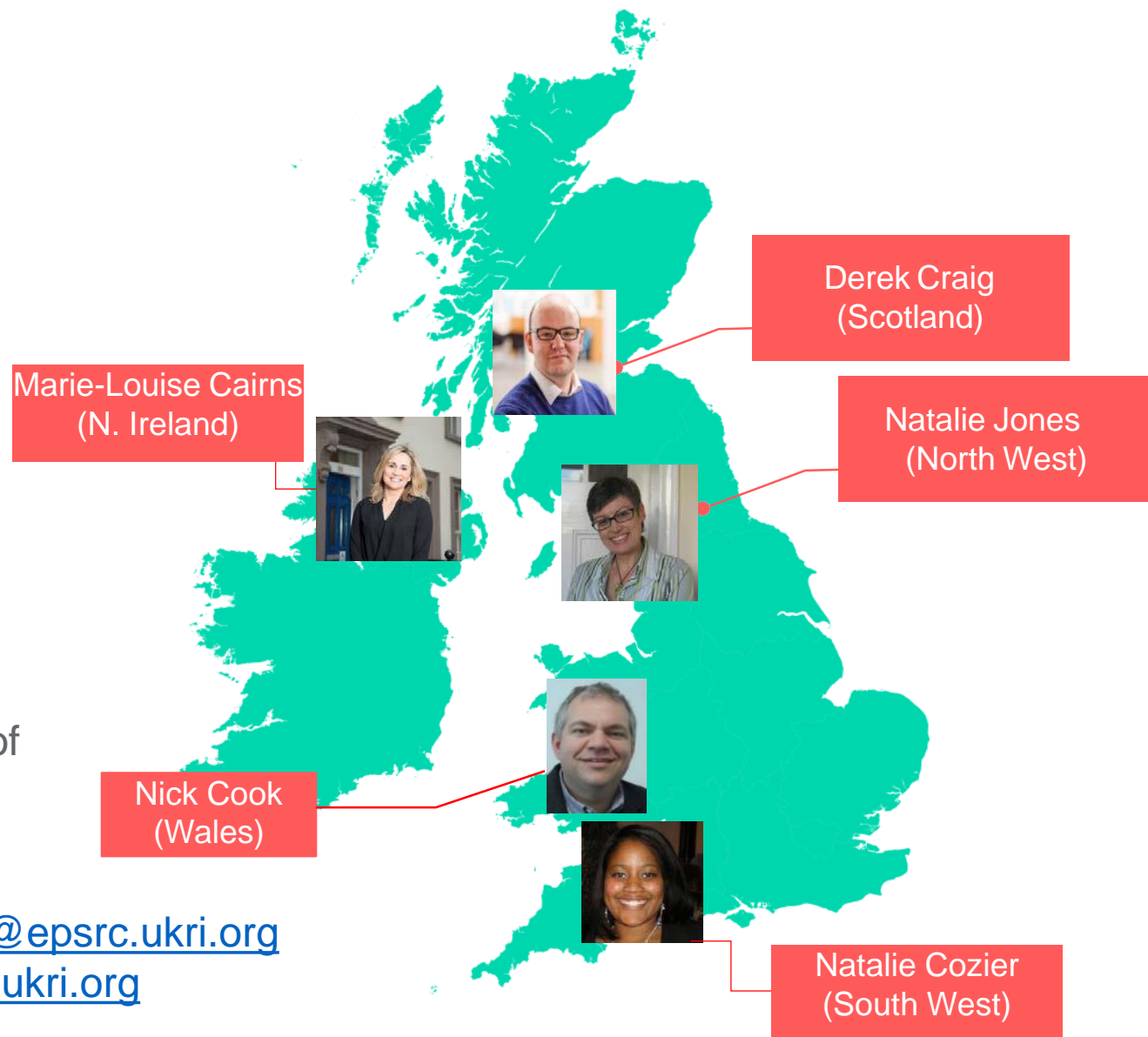
- Strengthening and developing relationships with existing and new regional stakeholders.
- Connecting the regional landscape to the national EPS strategy through:
 - horizon scanning activities
 - supporting clusters of excellence in regions
 - identifying and communicating regional and national EPS objectives
- Maximising the benefit of the delivery plan at a regional level – through building on our portfolio of excellence and being positive disruptors.

Contact details:

Marie-Louise.Cairns@epsrc.ukri.org

natalie.jones@epsrc.ukri.org

Or find us on [LinkedIn](#)



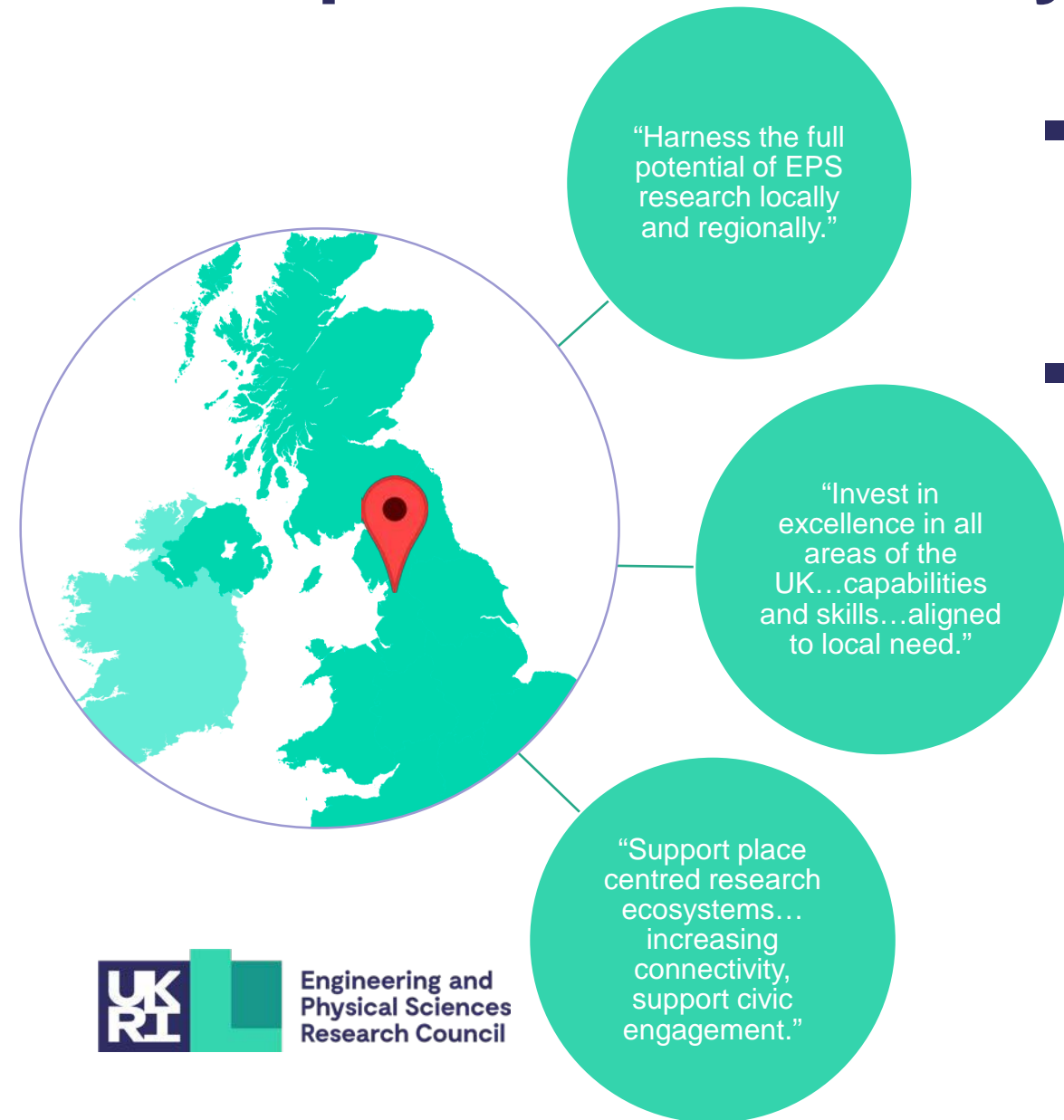
What we do

- Our job is to bring influence through knowledge flow by
 - building awareness of EPSRC amongst a wide range of stakeholders.
 - enhancing visibility of institutional research portfolios
 - understanding regional differences and ambitions
- What influence do we want to have
 - EPSRC
 - Wider UKRI

Our approach in regions

- **Engage regularly**
 - University leadership, local government departments and business/innovation bodies
- **Monitor**
 - SIAs, local economic strategies, growth deals
- **Strategic communications**
 - Priorities and strategies for investment
 - Policy development
- **Intelligence gathering**
 - Consultations
 - Workshops

Example of HRE activity: ESPRC PLACE strategy



- ESPRC Council has decided that ***Place*** should become a feature of EPSRC's ongoing strategy.
- Actions over the next 12 months:
 - Intensify regional engagement
 - Embed Place into core theme activities and schemes
 - Place interventions:
 - To be developed over the coming months,
 - Key theme - connecting existing and emerging research expertise, in and between places in the UK, to deliver benefits.

What we would value from you...

- Good visibility of your research interests.
- Consider engagement with institutional civic and business engagement strategies.
- Consider engagement with EPSRC/UKRI forums that set strategic direction including for impact, to make sure regional voices are heard.
- Connect with EPSRC Themes directly.



Engineering and
Physical Sciences
Research Council

Impact Roadshow 2021: How to handle impact in EPSRC proposals

Glenn Goodall, Head of Economic Impact

Michelle Lascelles, Senior Impact Manager

Ben Rendell, Senior Impact Manager

Deepali Lodhia, Portfolio Manager for Impact

Ann Chalkley, Portfolio Support Manager for Impact



Engineering and
Physical Sciences
Research Council

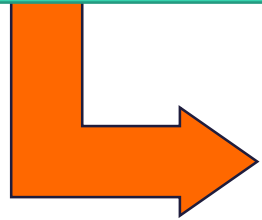
Responsible Innovation Update

Ben Rendell, Senior Impact Manager

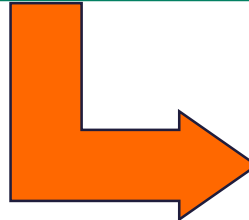
Responsible Innovation

EPSRC is committed to ensuring that our activities and the research we fund is aligned with the principles of **Responsible Innovation**

Research can have both positive and unintended negative impacts and outcomes



We have a duty of care to consider the potential ethical and societal implications of research



This act of consideration, and action where necessary, is **Responsible Innovation**

Responsible Innovation

EPSRC is committed to ensuring that our activities and the research we fund is aligned with the principles of **Responsible Innovation**

It is our ambition that responsible innovation is **business-as-usual** for researchers. This will be the case when researchers:

Take time to seriously consider with stakeholders both the positive and negative effects their work could have on the world we live in.



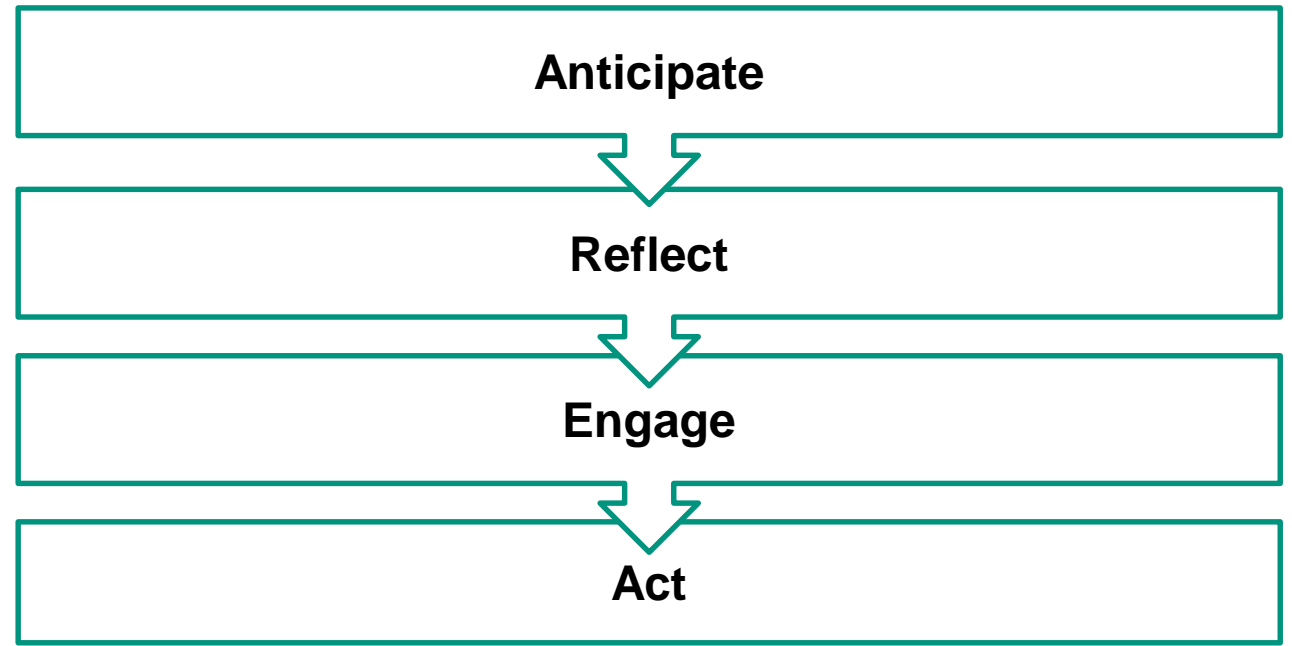
Actively adjust their research plans, where appropriate, to maximise positive and minimise negative impacts.

Responsible Innovation

EPSRC is committed to ensuring that our activities and the research we fund is aligned with the principles of **Responsible Innovation**

<https://epsrc.ukri.org/research/framework/area/>

AREA Framework is an approach to considering responsible innovation:

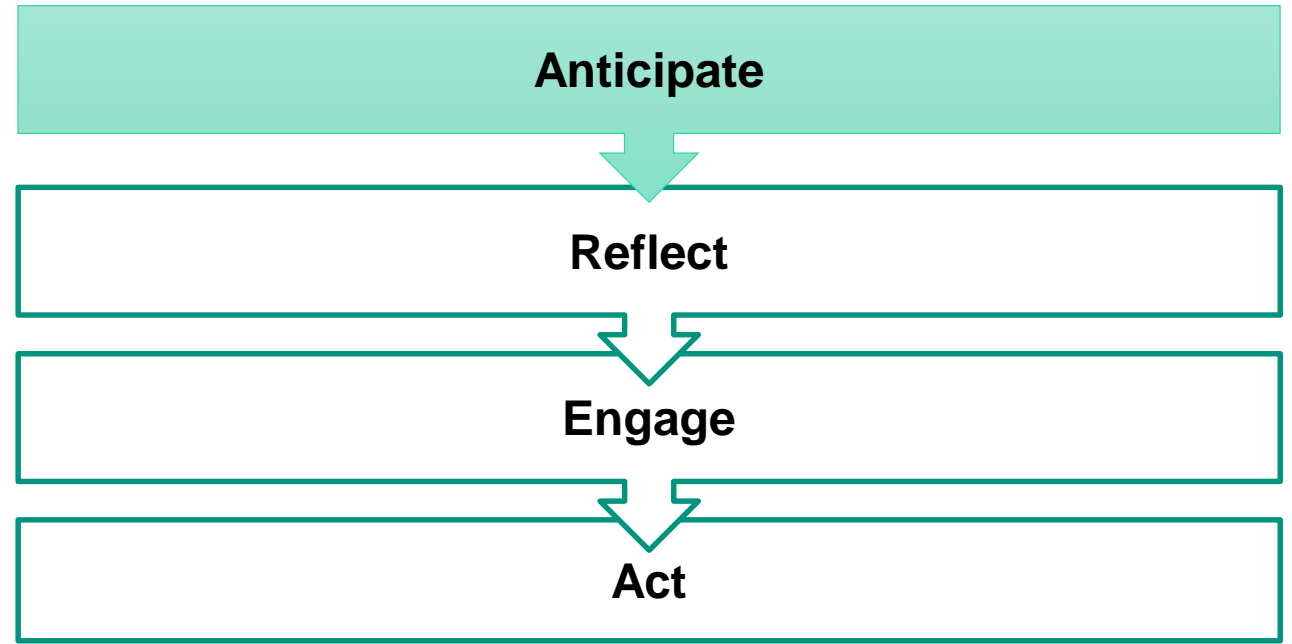


Responsible Innovation

Questions to ask:

- Is the planned methodology appropriate?
- Will the outputs be socially desirable?
- Why should this research be undertaken?

AREA Framework is an approach to considering responsible innovation:

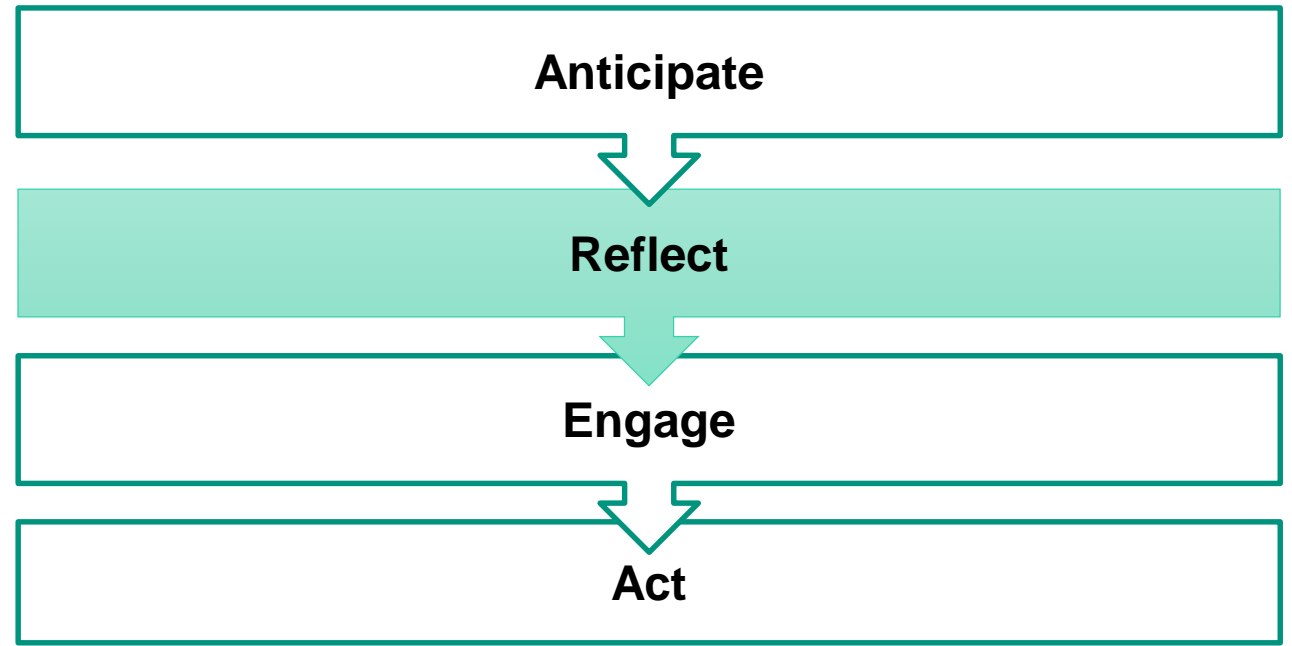


Responsible Innovation

Questions to ask:

- How do we know what the consequences might be?
- Is the research controversial?
- What don't we know about?

AREA Framework is an approach to considering responsible innovation:

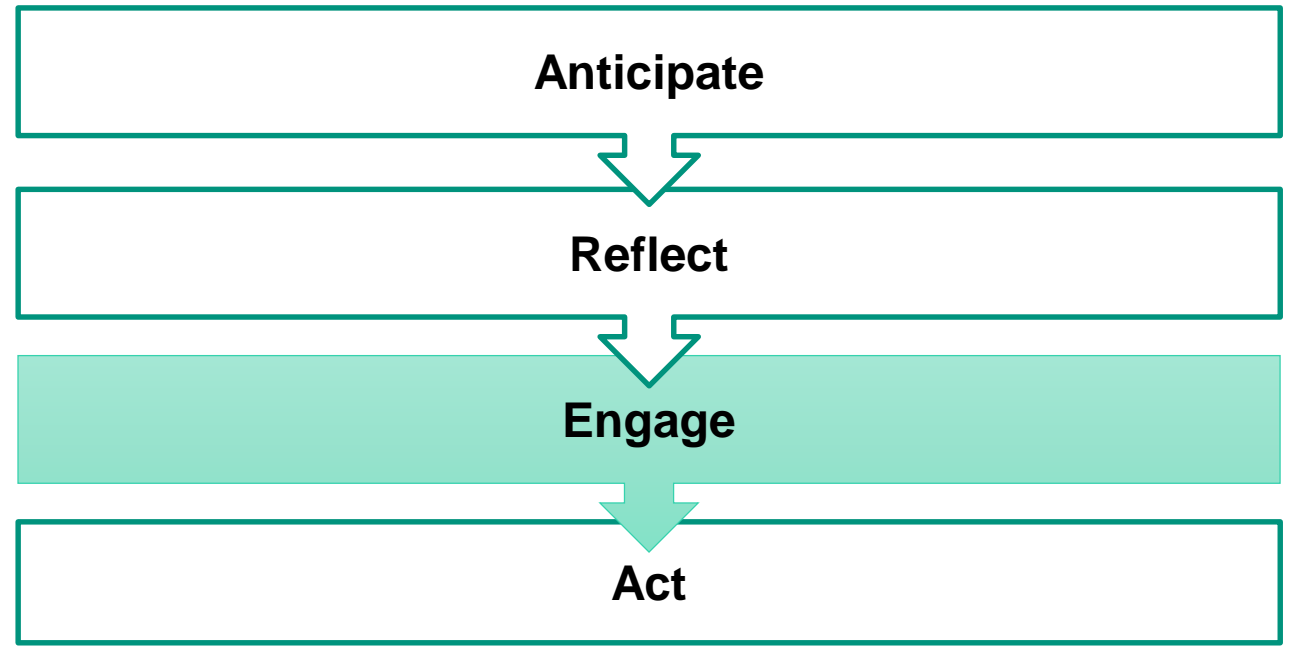


Responsible Innovation

Questions to ask:

- For whom is this research done?
- How do we engage with the appropriate group of stakeholders?
- What are the viewpoints of the stakeholders?

AREA Framework is an approach to considering responsible innovation:

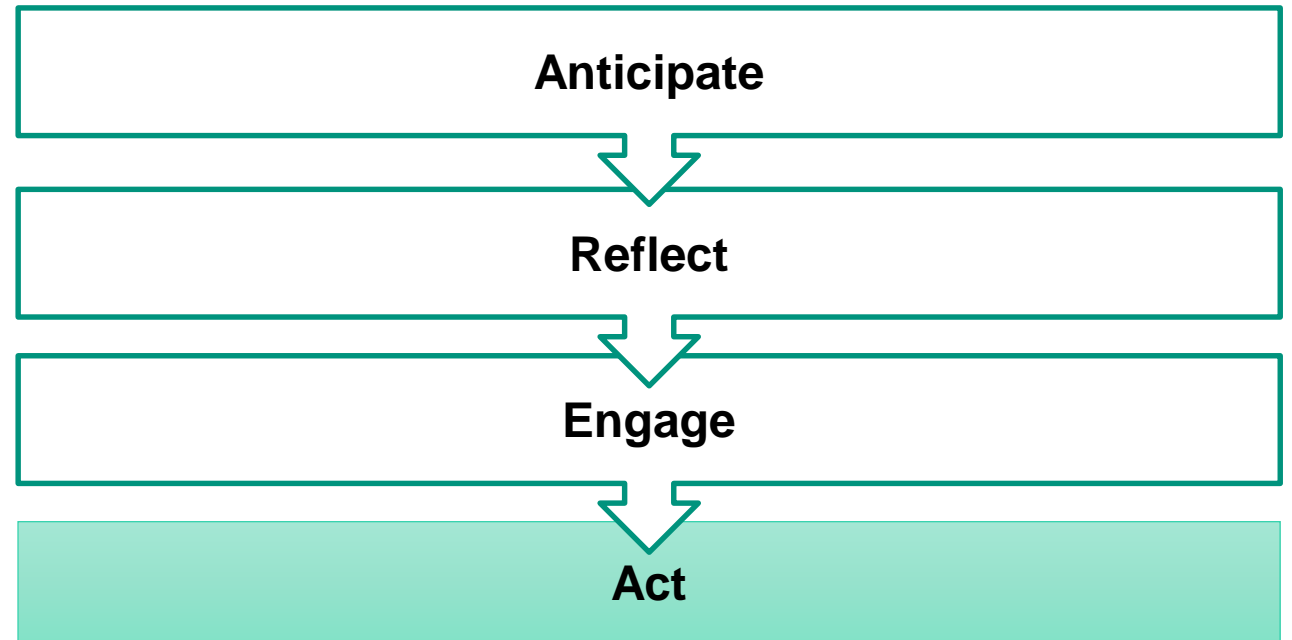


Responsible Innovation

Questions to ask:

- What training is required?
- What needs to be done to ensure social desirability?
- How do we ensure that the implied future is desirable?

AREA Framework is an approach to considering responsible innovation:



Responsible Innovation

Long term ambition for EPSRC (DP2019)

*“...responsible innovation is **business-as-usual** for researchers, and there is more comprehensive recognition of the opportunity it offers in exploring and opening up new, **more sustainable, more socially desirable pathways for innovation**”*

- EPSRC's RI approach and AREA framework well established...
...but we know we need to do more!



Engineering and
Physical Sciences
Research Council

Impact in the brave new world

Glenn Goodall, Head of Economic Impact

Impact in EPSRC Applications

Impact is now a **core consideration throughout the grant application** process and showing how the applicant(s) will **maximise the impact** of the proposed research should therefore be **intrinsic to the proposal** itself in a way that is **appropriate** to the nature and scope of the research being proposed.

For example:

- A **discovery research** proposal may focus principally on the generation of new knowledge
- Proposals with significant elements of **applied research** may have impacts related to economic and societal benefits

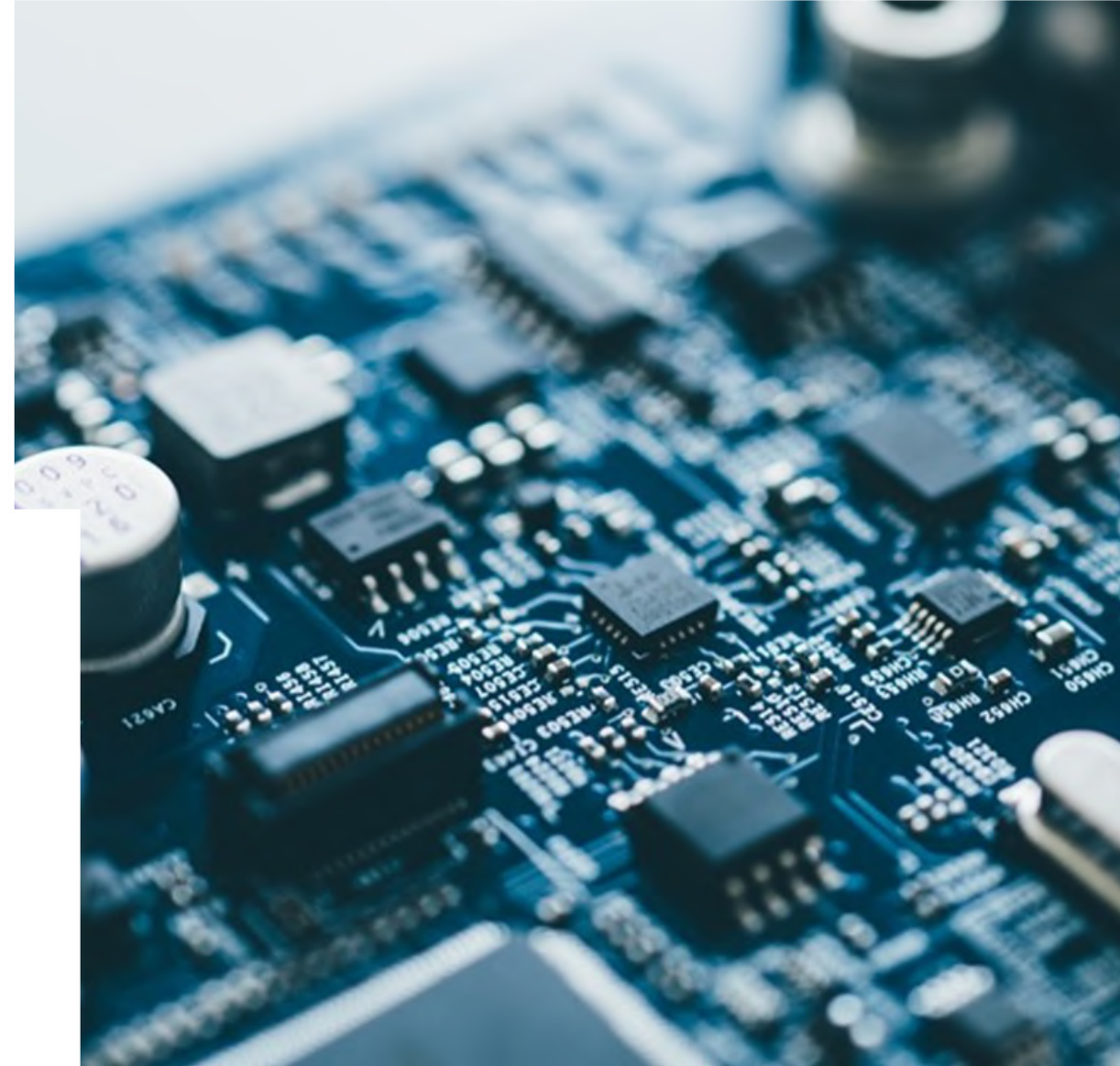
Impact beyond EPSRC

At UKRI Level

- Changes took place at pace
- Working together on common understanding

Stakeholders

- As important to Gov't as ever!
- Other academics
- Business / Industrial involvement / KE / KT

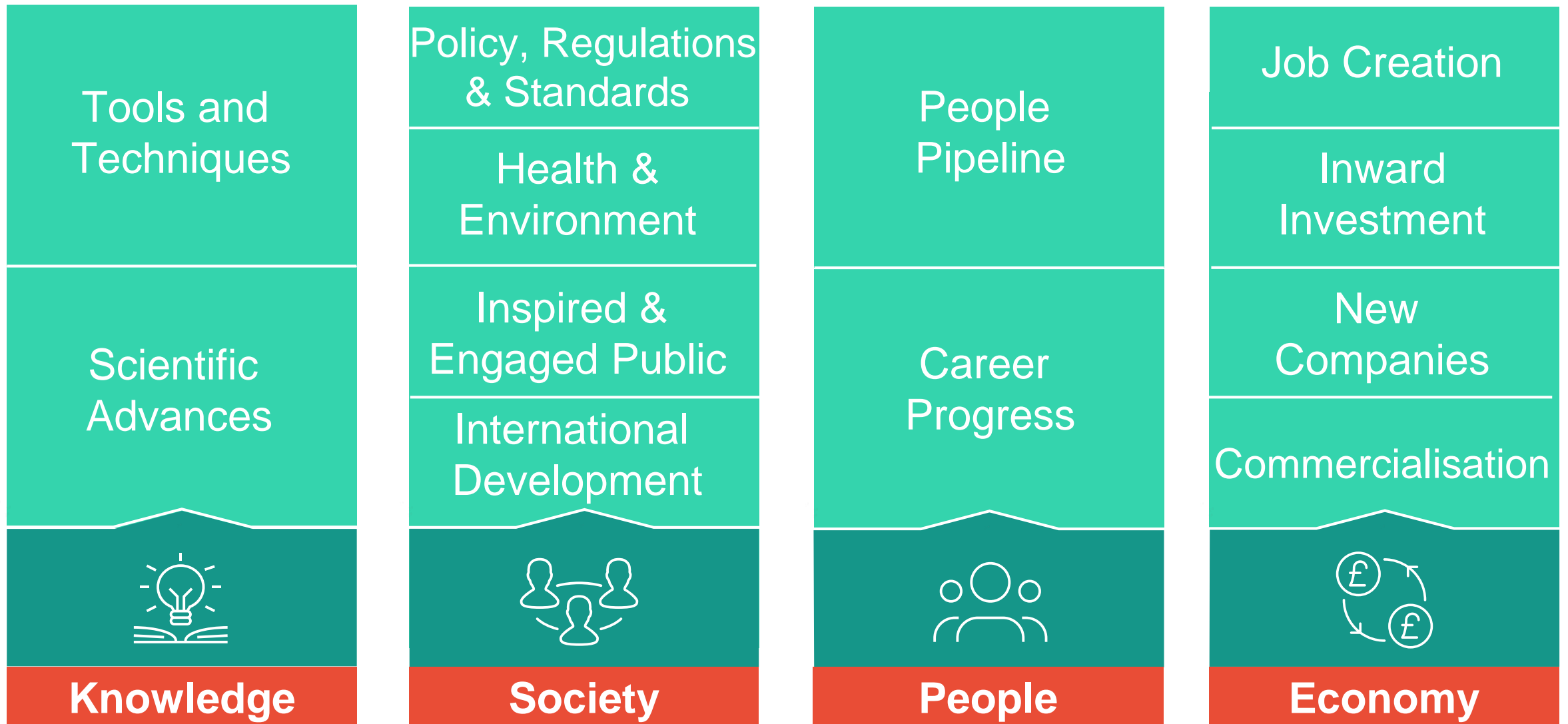


EPSRC new philosophy to maximise impact

Making the most of the Impact journey

- 
- An aerial photograph of a winding road through a landscape. The road is dark asphalt with white lane markings. Long, bright orange and red light trails from vehicles are visible, curving along the road. The surrounding area is a mix of green vegetation and dark, rocky terrain.
- (1) The lifecycle of research
 - (2) Planning for outcomes
 - (3) Appropriate activities
 - (4) Communication of research success

Examples of Types of Impact



Your Research

The take home messages

When considering the lifecycle of research, remember...

- 
- (1) **Impact** is still important
 - (2) Consider the **outcomes** and **impacts** of your research
 - (3) Think what the **appropriate impact activities** needed and **resources** you will require when writing applications

EPSRC Impact Deep Dive 2021

A review of how impact is being embedded in application since March 2020

Audiences of interest:

- Applicants
- Reviewers
- Panel members
- Business & other stakeholders
- Research Offices

Format:

- Series of tailored surveys
- Interviews
- Review of guidance, additional documents and other resources available
- SAN Workstream



Engineering and
Physical Sciences
Research Council

Handling Impact in applications to EPSRC

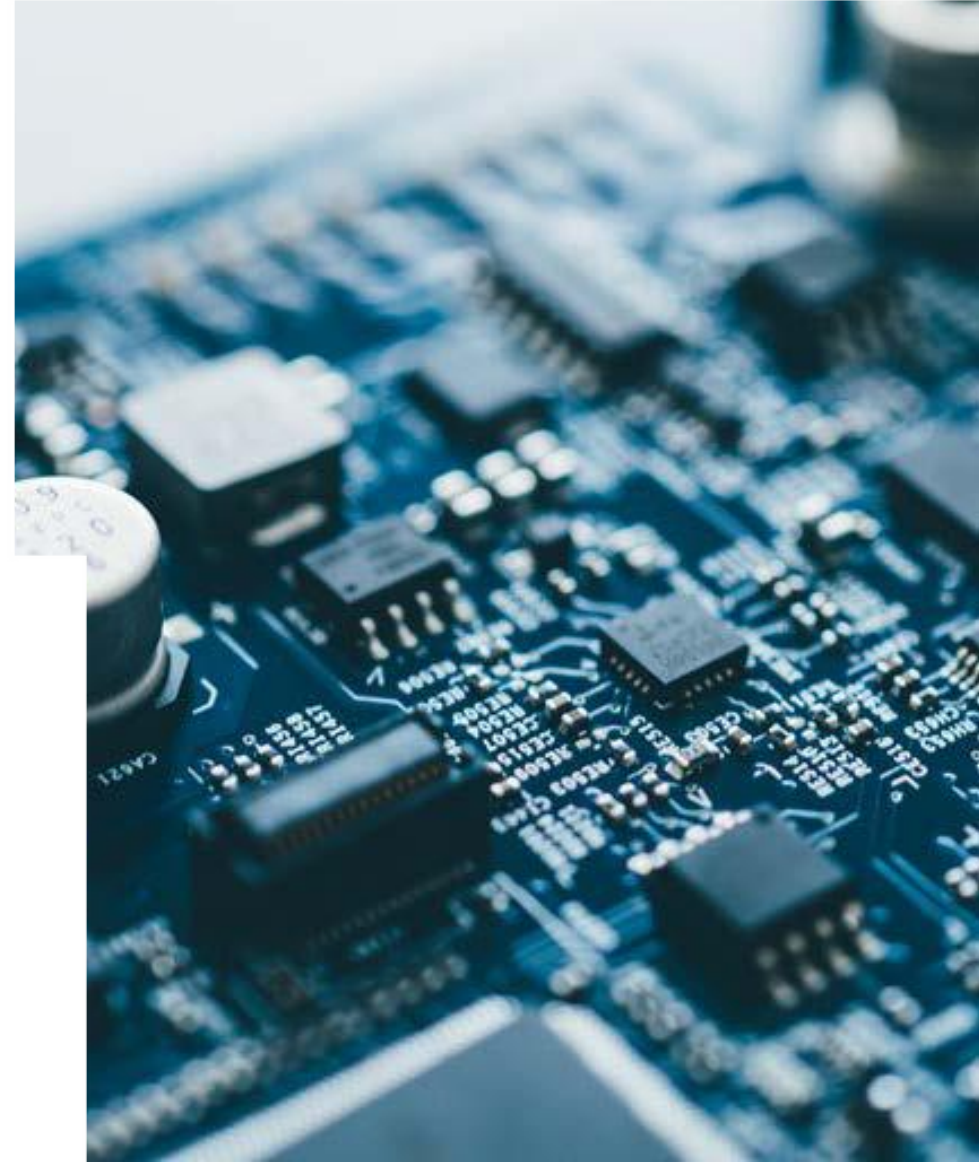
Deepali Lodhia, Portfolio Manager for Impact

Planning New Activities with Impact in mind

For each impact related activity consider:

- The objective and potential **benefits**
- Potential **stakeholders**
- Use of **engagement**
- Appropriate **timings**
- **Costs** and **resources** involved

Space is Limited – Make it **specific** and **succinct**



Impact at the Application Stage

Integrate Impact throughout the case for support

- Track record
- Background
- National Importance
- Research Hypothesis and Objectives
- Programme and Methodology

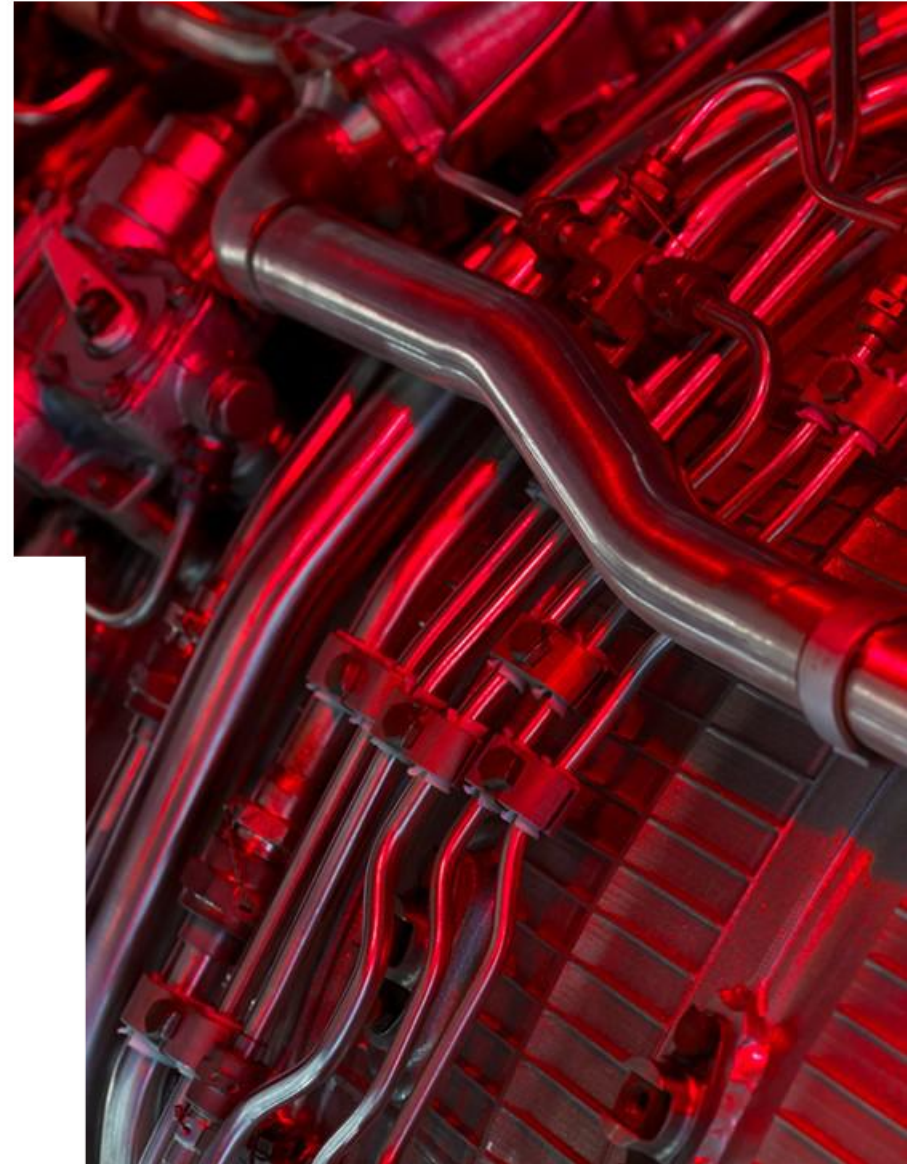


Impact at the Application Stage

Resources and Management

- Who will be **responsible** for impact activities?
- How much will it **cost**?
- How are your **partners** involved?

EPSRC **strongly encourage** the full costing and request for resources for any relevant impact activities.



Impact at the Application Stage

Examples of Impact Costs

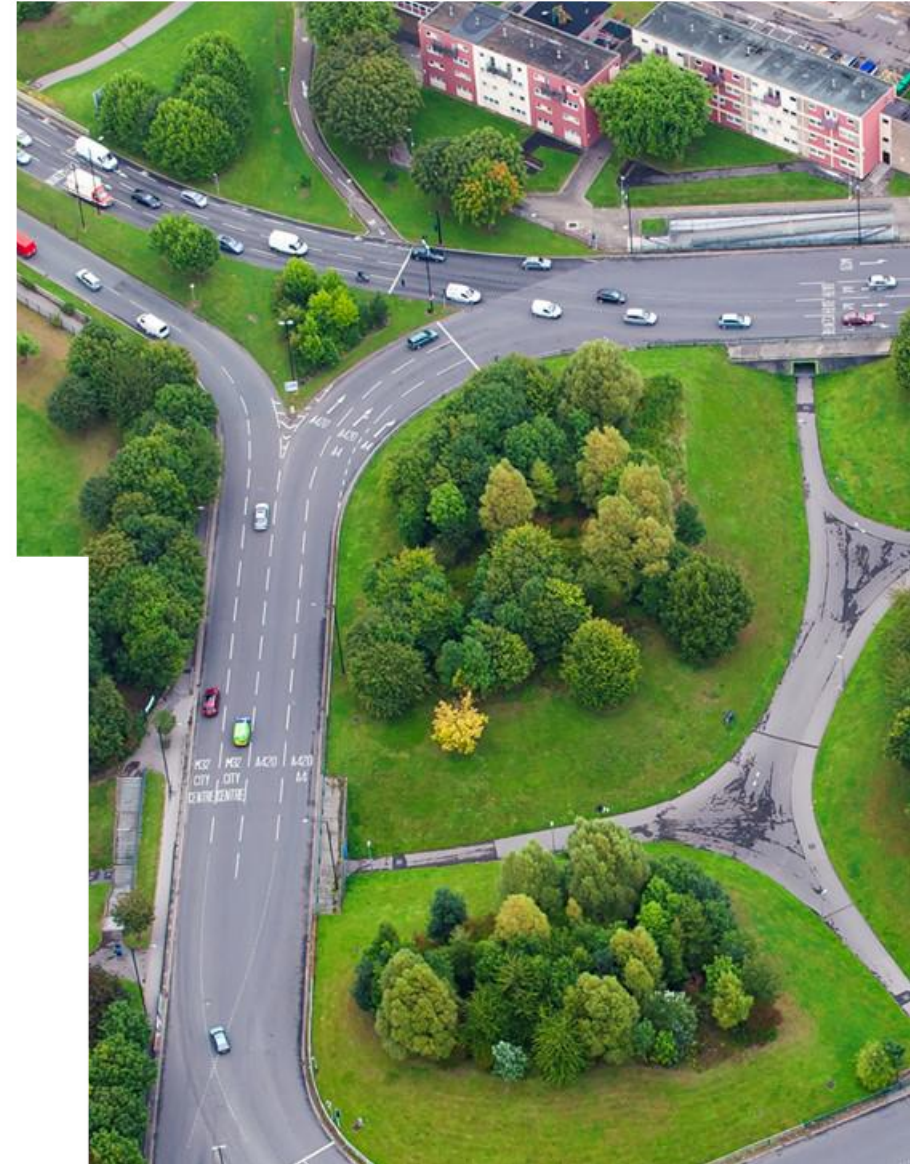
- Travel costs
- Partnership building
- People exchange / secondments
- Training for researchers
- Engage expert staff
- Onward routes to commercialisation
- Comms
- Knowledge Exchange
- Data management
- Sharing of novel tools/techniques



Impact at the Application Stage

This is new for reviewers too...

- Include Impact activities and milestones in the Gantt chart
- Flag impact activities through the case for support
- If it aligns to activities in a work package include an impact heading
- For activities that don't align to work packages but underpin the overall impact development activities, create a specific section and use it to tie the different areas of impact content together.



Impact at the Application Stage

Completing reviews and on panels

Impact is covered under the **Quality criteria**, when assessing:

- Think about what impact activities might be appropriate
- Are activities full costed and itemised?
- Which stakeholders might be involved? Is it obvious how they are engaged



Enabling impact whilst carrying out research

EPSRC interested in the outputs, outcomes and impacts of research

- Case studies or insights
- Short, medium and long term
- The PM or themes you interact with will be interested
- Always sign post your research data outputs on Research Fish



Enabling impact whilst carrying out research

Remember

- EPSRC does not expect applicants to predict the impact of their research.
- Reviewers are not expected to make assumptions about the probability of the benefits being fully delivered.
- There is no expectation for impacts to be realised within the lifetime of the research project.



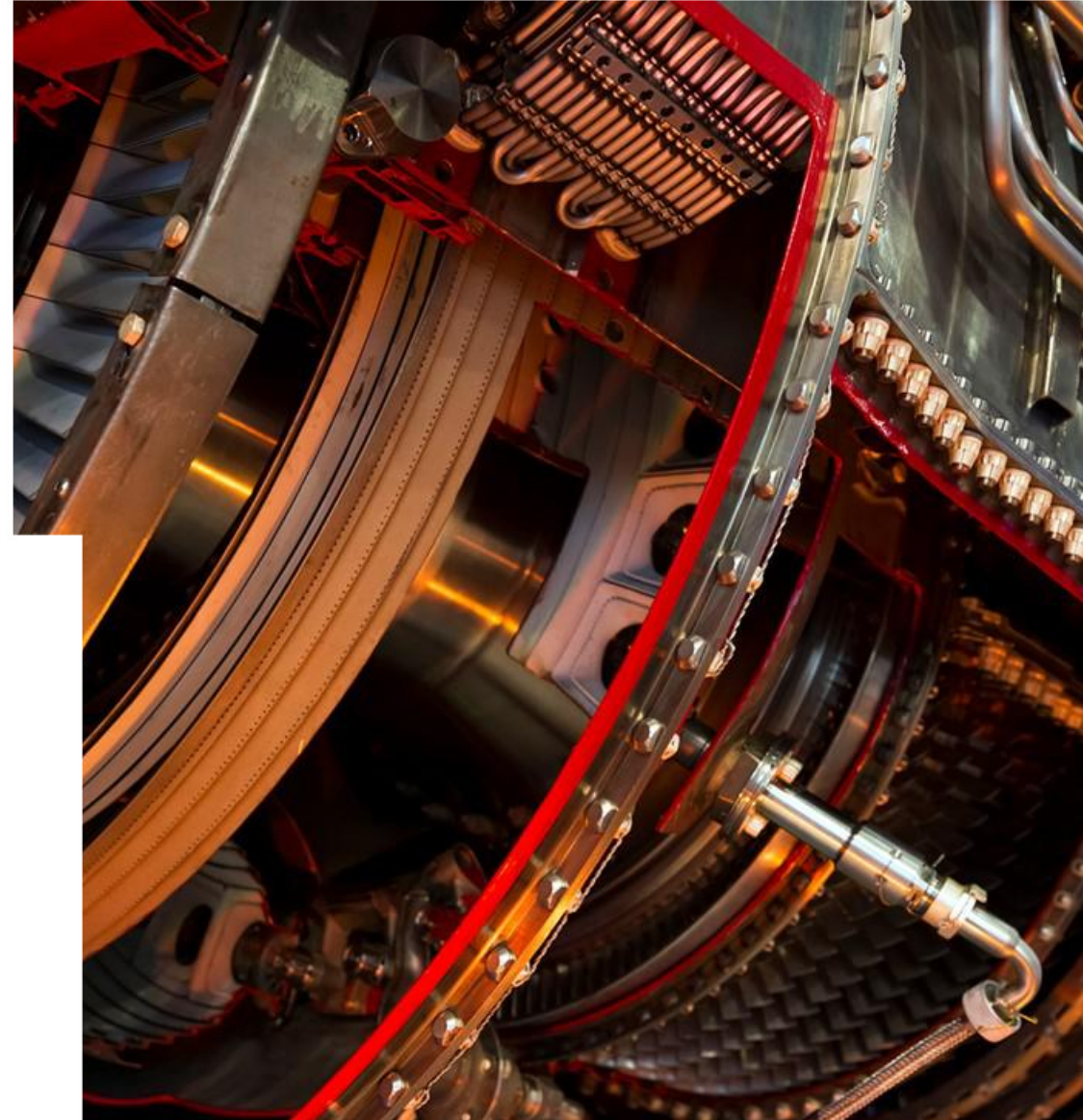
In summary

Remember to plan for impact

- **Impact** is still important
- EPSRC are interested in the full “**lifecycle of research**”
- Consider the potential **outcomes** and **impacts** of your research, upfront
- Think about the **appropriate Impact activities** and **resources** when writing applications



Engineering and
Physical Sciences
Research Council



Further Help

Guidance Material

<https://epsrc.ukri.org/files/funding/calls/case-for-support-guidance/>

Contact your **EPSRC Portfolio Manager** (contact details available on our website)

Impact email:
AcceleratingImpact@epsrc.ukri.org



Engineering and
Physical Sciences
Research Council

Thank you

We will now take a short break
and reconvene in 15 minutes for
the Q&A



Engineering and
Physical Sciences
Research Council

Questions?



Engineering and
Physical Sciences
Research Council

Thank you



Engineering and Physical Sciences Research Council



@EPSRC



EPSRCvideo