

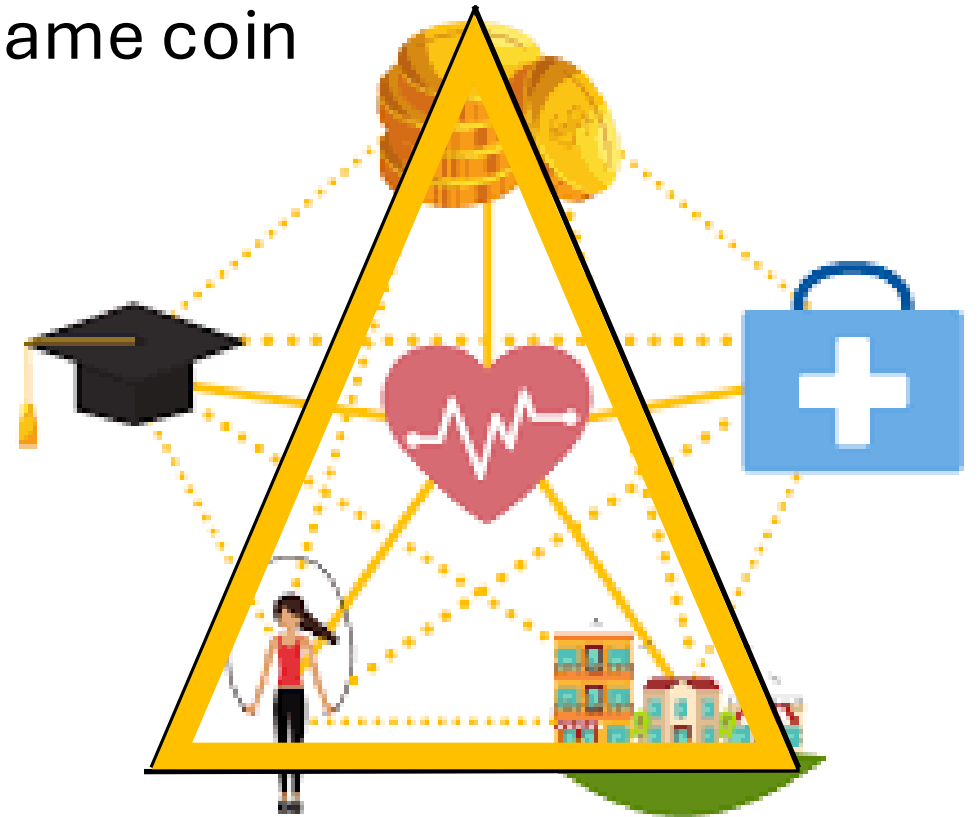
Opportunities for partnership between health and education: *Delivering the healthiest generation of children*

Steve Turner

8th Sep 2025

Take home messages

- **Golden trinity – education, health and wealth**
- Health and education, two sides of the same coin
 - Good health and education today
 - Good health and wealth tomorrow
- We know what needs doing
- We all need to get going together!
 - Small margins, big gains



Golden Trinity

✓ Health = Wealth

“A healthy workforce contributes to:

- higher productivity
- lower healthcare costs
- reduced absenteeism

Ultimately boosting economic growth”



Adam Smith
1723-1790

Golden Trinity

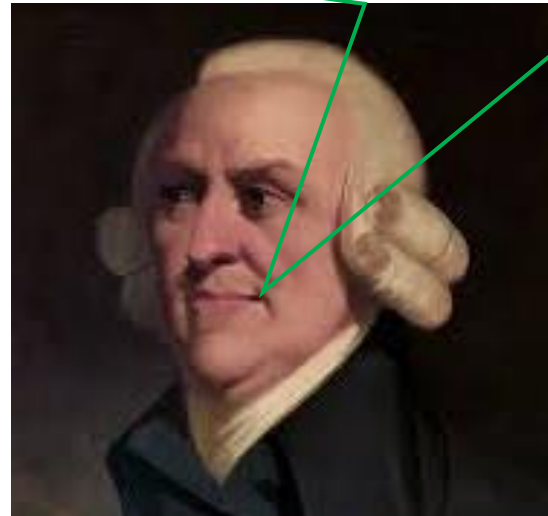
✓ Health = Wealth

“A healthy workforce contributes to:

- higher productivity
- lower healthcare costs
- reduced absenteeism

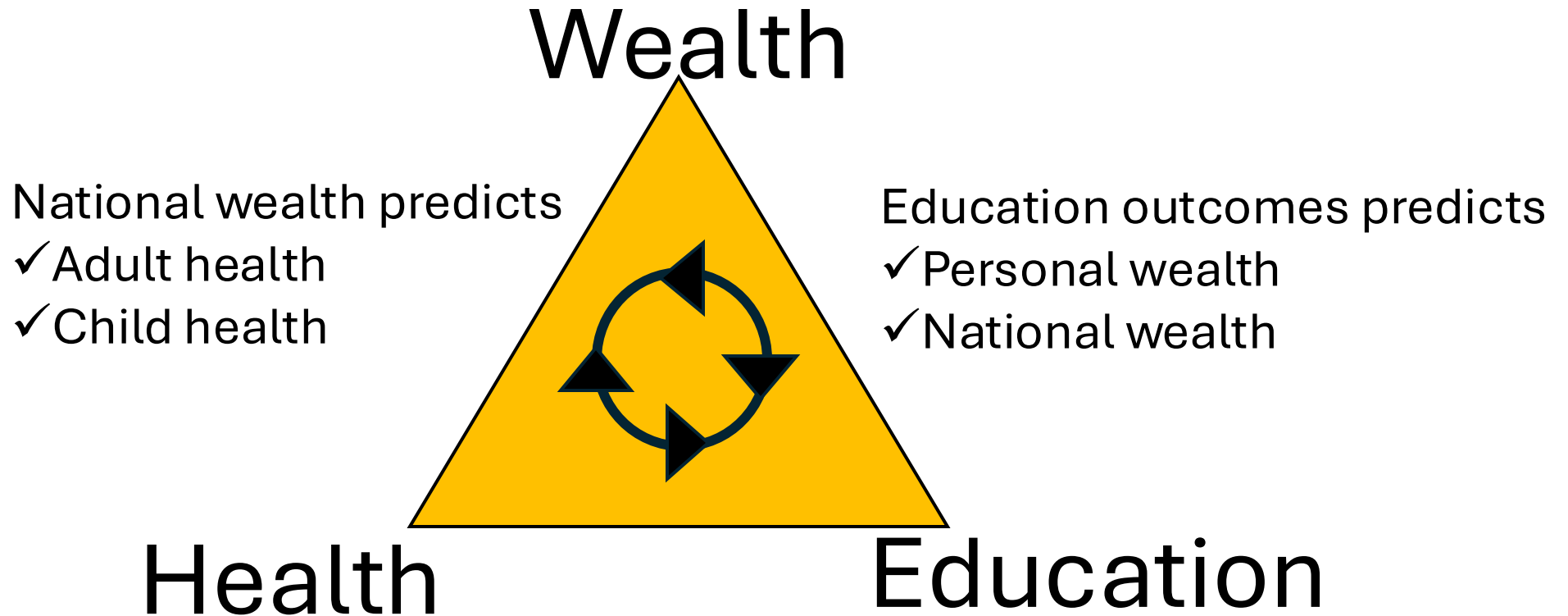
Ultimately boosting economic growth”

Schools and education weren't a big deal in my day.... Steve, please explain why they are so important.



Adam Smith
1723-1790

Golden Trinity



Why are health and education not integrated?

Misbeliefs

- Childhood not relevant to adulthood?
- Non-attendance “naughty”
- Political cycle too short

Data

- Information governance
- Linkage

Awareness coming!

- 42% ↑ economic inactivity in 26-35yo (2019-22)*
- “Raise the healthiest generation ever”
- Single Unique Identifier



[*Economic inactivity - GOV.UK Ethnicity facts and figures](#)

Good physical and mental health

A journey not ending with the NHS!

NHS

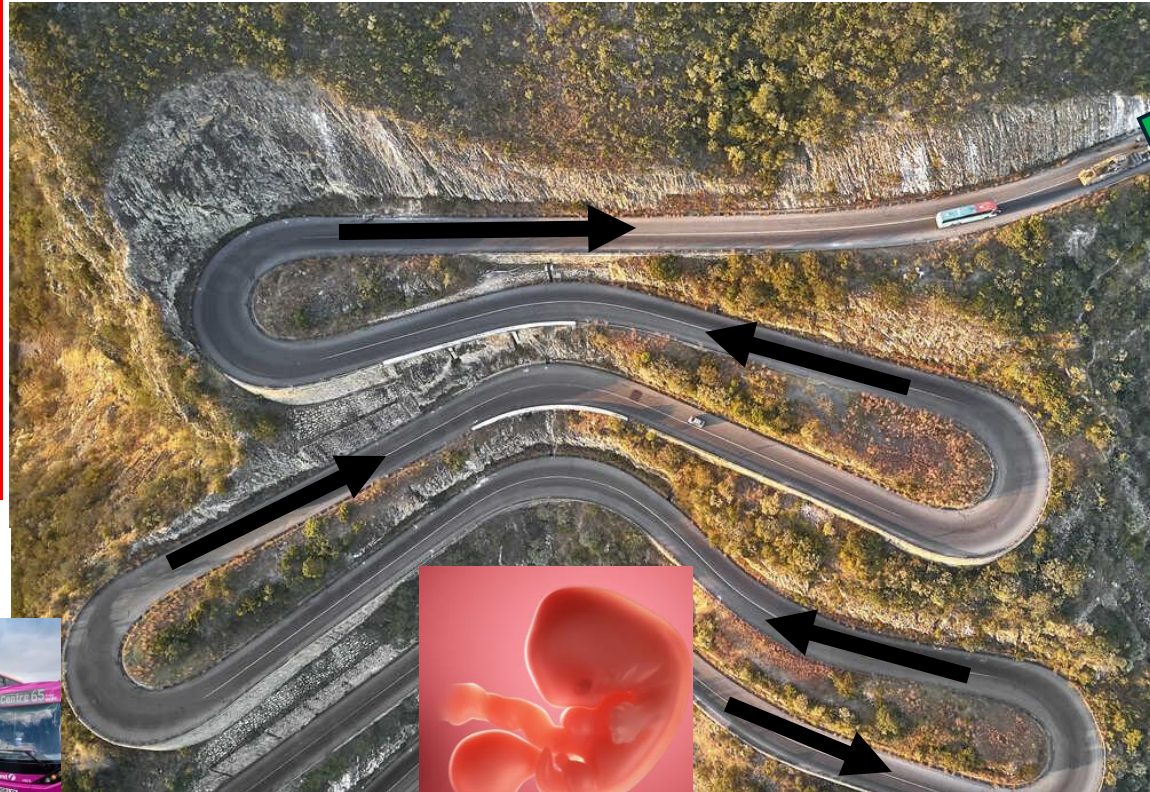
Vaccination

Early detection



Education

Transport



The start



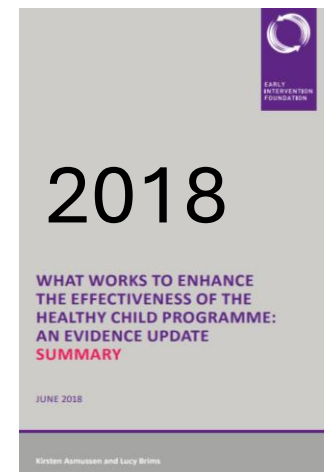
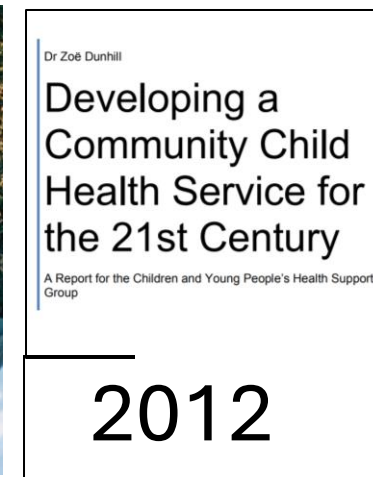
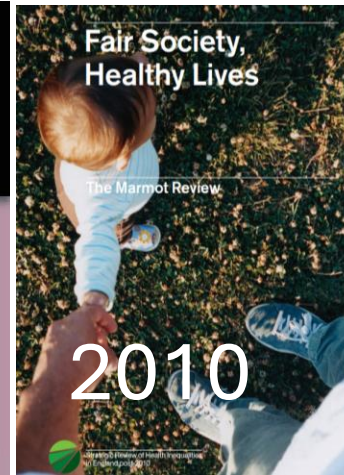
Law and
Order

“Lived
environment”



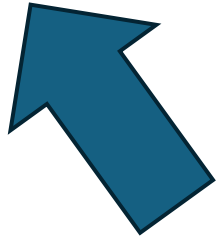
What are the solutions?

- Well-described!
- Common themes
 - Community based
 - Child centred
 - Prevention
 - Address deprivation



What are the solutions?

- Well-described!
- Common themes
 - Community based
 - Child centred
 - Prevention
 - Address deprivation



School aged children

- ~1/3 waking time in school
- Socialisation
- Social norms
- Lifestyle
- Role models
- Education

How can you do all this without schools??

Opportunities for partnership

- Community hubs everywhere!
 - Family hubs
 - **Youth futures hubs**
 - NHS Health Hubs
- Staffing (*Health Policy Influencing Group*)
 - **School nurses**
 - Health Visitors
- Holistic care
 - **Education/school part of health**
 - Work with RCN and RCGP
- School attendance
 - **Clinics in school?**
 - Back to school after appointment

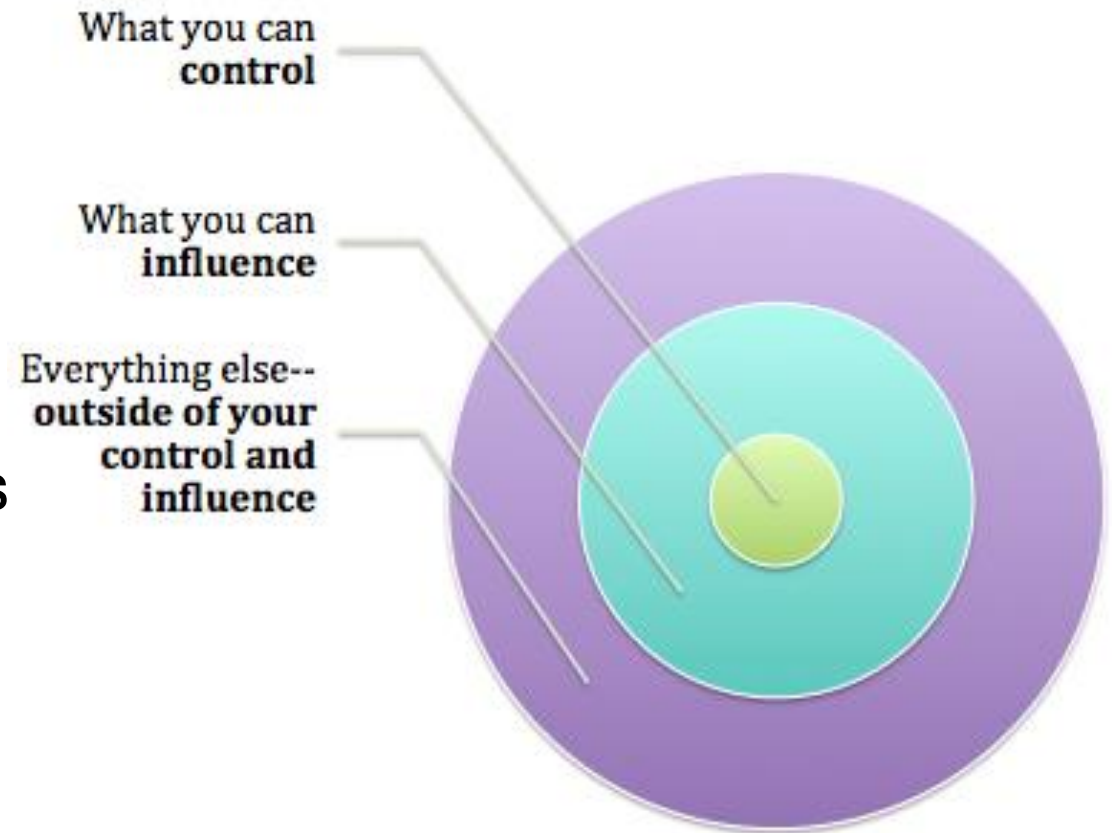


How do we drive the change?

No-one can do it alone

We need to work our zones!

- Start with what you can control
 - Your workplace
 - Pathways to your service
- Join up/influence across our zones
 - Community based
 - Child centred



Adult mental health as a case study

- 50-75% onset by 15 years
- ~700k economically inactive
 - 73% disability benefit*
 - 90% other benefit*
- Benefit cost £2.6B/y
 - Assuming £100/week
- Cost to society huge
- Cost to individual immeasurable



*Likelihood of benefit receipt among people who are economically inactive because of long-term ill health, England and Wales - Office for National Statistics

Adult mental health as a case study

- CBT for anxiety and low mood
 - Recovery 30-50%
 - Cost 10 X £60
- One off cost to move one individual <£1800
- Scaled up benefit
 - Individual
 - Exchequer (£5200/y)
 - Within one political cycle!



*Likelihood of benefit receipt among people who are economically inactive because of long-term ill health, England and Wales - Office for National Statistics

Take home messages

- **Golden trinity – education, health and wealth**
- We know what needs doing
- We all need to get going together!
 - Small margins, big gains

*It takes a
village to
raise a child....*

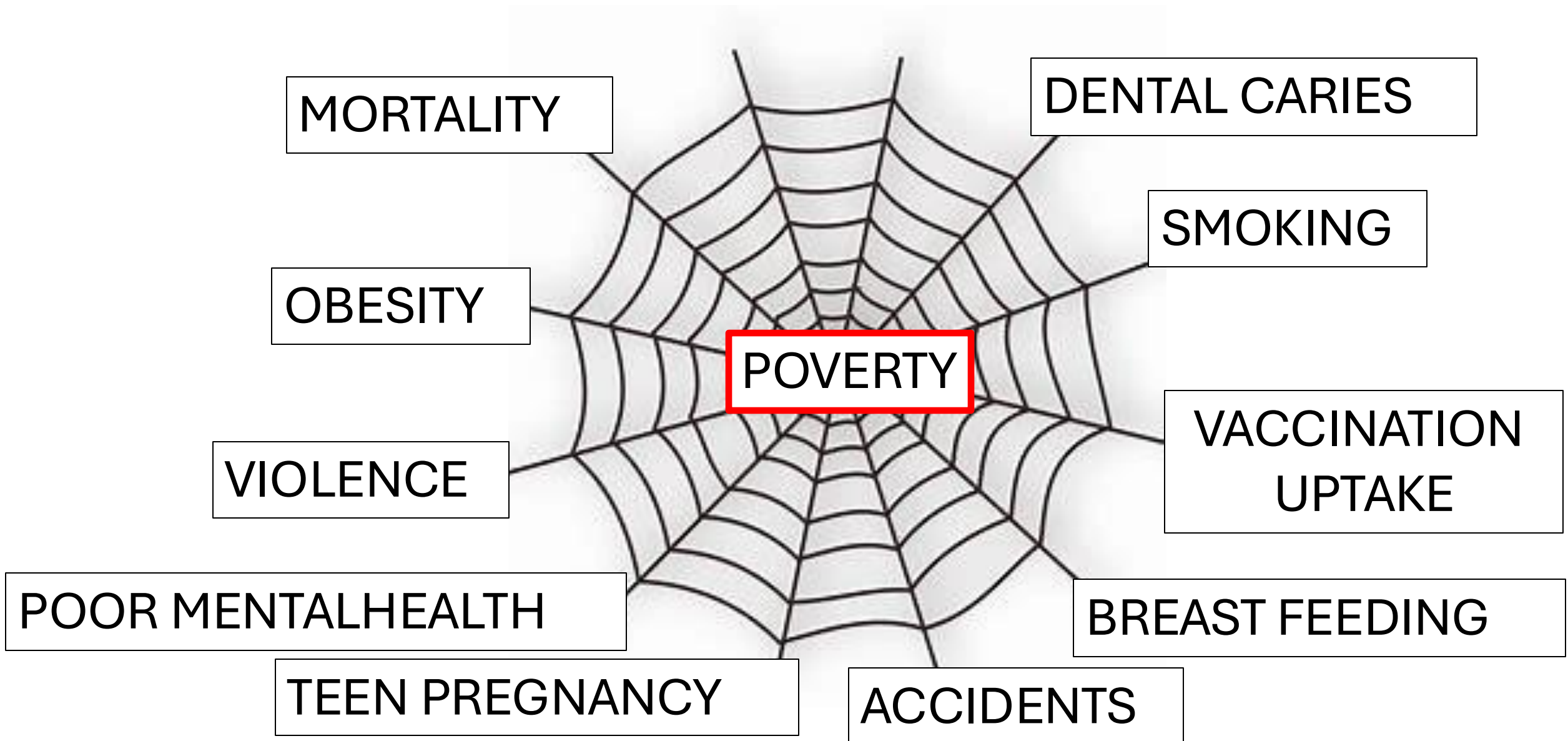


Thank you very much

We are 25% of
the population
and 100% of the
future



The scar of poverty



Many pieces in the jig saw

